



Special Edition
January 2012

BSJ Inspiring Times

BSJ Care Center: A Bethany St. Joseph Corporation Facility
Inspiring Life, Hope & Healing

2501 Shelby Rd
La Crosse, WI 54601

Phone: 608.788.5700
Fax: 608.788.4030
www.BSJcorp.com

Administrator's Message

The New Year is bringing changes to BSJ Care Center; especially to our Avalon Neighborhood. The development of a Neighborhood Director position will enhance our services on the Avalon Neighborhood. This person is dedicated to coordinating care and services on Avalon. I am pleased to announce that Julie Newman has accepted the position of Avalon Neighborhood Director. Julie was formerly the Staff Development Coordinator for BSJCC. Concurrent with this change, Avalon will have a dedicated social worker, Rachel Forer, and staff scheduler, Jan Steenberg. Julie, Rachel, and Jan are in the process of relocating their offices to the former Health Information Department on Avalon to be more accessible to residents, families, and staff. Along with Julie, Jan and Rachel, Chelsea Grosskopf, Avalon Dining Services Supervisor and Tamar Semke, Recreation Therapist will also be primarily based on Avalon. All of these enhancement changes will provide more support for those individuals with dementia and memory care needs.

On January 4th we welcomed back Belinda Nickelatti, Director of Nursing. She has been on medical leave since mid-November. We thank our Assistant Director of Nursing, Sharon Embke, along with other members of our nursing staff who filled in during Belinda's leave. We are all glad to have Belinda back.

Our goal is to continue to maintain the lowest price for services while being able to cover costs. However, we have had to update some of our pricing for services such as hair care, which you will see in this newsletter.

Our Dining Services Department has taken on a new name to better describe our dining and meal service goals. The new name is Dining and Nutrition. One of our 2012 dining and meal service goals is to offer more flexible meals that meet the needs of our residents. This change is consistent with our continuous quality improvement program. Watch for more upcoming changes.

Thank you for your continued support and feedback. Please feel free stop by and let us know about any comments or concerns you have.

Larry Pupp, Administrator



Transportation Highlights:

BSJ Care Center provides lift van transportation to medical appointments on a first come first serve basis. Due to the limited number of available transportation slots, it is important that we are notified of any cancellations, changes or additions as soon as possible. If you choose to transport your loved one to appointments, we appreciate to be notified of cancellations, changes and additions as well.

Starting in 2012, we will be encouraging more family participation in medical appointments. As you make appointments and make us aware of them, our Health Unit Coordinators will be inviting you to join your loved one at their appointment(s). You may meet your loved one at the appointment with transportation arranged or provide the transportation to/from the appointment. By attending the appointment with your loved one, you will have the opportunity to ask questions and discuss medical concerns directly with the physician therefore enhancing your understanding of your loved ones medical condition.

Note from Social Services:

Happy New Year Residents & Families,

We would like to let you know about a free service that is available to qualifying residents. The service is called Representative Payee. A resident may qualify for this service by choosing to stay at BSJ Care Center long term **and** being eligible for medical assistance (MA). As a benefit to signing up for this service, residents/families do not have to worry about paying their monthly Nursing Home Liability or other monthly bills from the Social Security income timely. The Representative Payee from our Social Services Department is able to assist with making these payments. If this service is of interest to you or you would like more information, please don't hesitate to call Danielle at 608-788-5700 ext 228. Feel free to leave a voice mail or send an e-mail. Danielle's e-mail is daniellej@bsjcorp.com

Dementia Caregiver Support Group meets

monthly on the 3rd Monday from 5:30pm-
6:30pm in the Blue Room

All are welcome!

Guest Meal Cost Update

We like to have guests join us at meals and we have always kept the price as low as we can. However, rising costs have required us to take another look at the price of a guest meal.

Effective **January 2, 2012**, the price of a guest meal will be \$6.00. We will charge the same price for breakfast, lunch and supper.

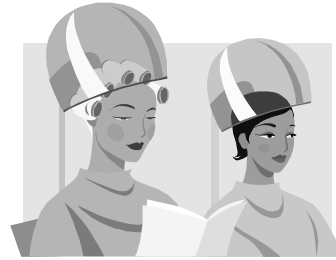
To reserve your guest meal(s), please call the kitchen in advance to let us know you are coming and pay \$6.00 per meal to the cashier.

We look forward to having you dine with us!

Francie Ball, Registered Dietitian
Director of Dining & Nutrition

BSJ Care Center-Beauty Nook:

Offering Full Service Hair Care



HAIR CARE SERVICE	2012 COST
SHAMPOO SET	\$13.00
SHAMPOO DRY	\$ 9.00
SHAMPOO	\$ 7.00
BLOW DRY	\$12.50
HAIR CUT	\$13.00
TRIM	\$ 9.00
PERMANENT	\$42.00
WEEKLY RINSE	\$ 4.00
30 DAY COLOR	\$12.00
TINT	\$15.00
MANICURE	\$12.00
COMB-OUT	\$ 5.00
FROST	\$40.00
BEARD TRIM	\$ 4.75

Scheduling an appointment is easy

- ♥ Call 788-5700 extension # 242
- ♥ Stop by the Beauty Nook (near the Blue Room)
- ♥ Ask any staff member to schedule an appointment

Payment is due in advance via *Resident Account* or by making payment with the Cashier (Room 514)

Note: To set up a *Resident Account* see your Social Worker

Please, no tipping!! 😊

We continue to save Festival Foods Receipts.

You are invited to drop off your receipts in the basket by the receptionist desk.

We are currently accepting receipts for January through March 2012.

Festival Foods generously awards a percentage of the total receipts. We in turn use the funds to enhance our Recreation Therapy program. As an example, we purchased some resident Christmas gifts with these funds.

We thank you for your support!



Recreation Therapy News

HAPPY NEW YEAR!!

It's hard to believe that we are already in a new year! Christmas 2011 seems to have come and gone so quickly. I would like to thank all of you who shared the day or evening with our residents at our Christmas parties. We had over 235 RSVP's!! I hope you enjoyed the great music, holiday goodies and of course our visit from Santa. We also were blessed to have had lots of special entertainment and visits from various groups this holiday season.

I hope all of you had a great holiday season and now we can look forward to spring!! Doesn't seem like winter without the snow but I am sure it will be arriving soon!!

We are looking forward to having 2 Recreation Therapy interns. Rachel and Elizabeth will be with us from January 9th-April 27th. They are both students from UW-La Crosse who are majoring in Therapeutic Recreation and will be here 40 hours a week for 16 weeks!!

With February right around the corner, please be watching in the mail for the letter with details about our Valentine's Day sale. Once again we will be selling red, white, and pink carnations, Valentine Mylar balloons, jumbo cherry Valentine's cupcakes and our famous singing telegrams!! The proceeds will benefit our Recreation Therapy Program.

Kim Scholze, Recreation Therapy Supervisor

Influenza – Cause and Effect

Influenza can be a serious disease and can cause mild to severe illness. At times it can lead to hospitalization and or even death. Most otherwise healthy adults who get influenza can begin to infect others 1 day before their symptoms develop to 7 days after they become ill. Facilities that employ healthcare workers should try to vaccinate their employees who do not have medical contraindications to the vaccine.

Bethany St. Joseph Care Center encourages all employees to receive a vaccine to protect not just themselves, but our residents also. Flu vaccines were administered during the month of November to our BSJ Care Center residents. During November, we also hosted several "Flu Clinics" for our employees. The "Flu Clinics" seem to have been well received by our staff. Those who chose not to receive the vaccine, watched the video "Healthcare Worker Influenza Vaccination: A Matter of Patient Safety" and read the CDC information sheet "Inactivated Influenza Vaccine: What You Need to Know 2011-2012". They then completed a post test and signed a declination form.

This year we did well in encouraging our staff to receive the vaccine. Approximately 89% of BSJ Care Center employees received the flu vaccine and approximately 83% of our residents received the vaccine. Some of our residents and employees were unable to receive the vaccine due to allergies. All in all, we were successful in having the majority receive the flu vaccine. Next year we hope to have those percentages even higher.

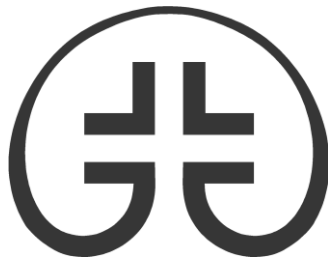
At this time, we have yet to have any outbreaks of influenza. Knock on wood. I would like to thank our employees and residents for protecting themselves and others from this serious disease process. For those of you who would like to receive a vaccine, it's not too late. Our employees need only contact me, or if you are a current resident, just let your Avenue or Charge nurse know. Arrangements will be made for you to receive a vaccine.

Sharon Embke, Assistant Director of Nursing

BSJ CARE CENTER WHO'S WHO

Administrator: Larry Pupp
Director of Nursing: Belinda Nickelatti
Assistant Director of Nursing: Sharon Embke
Avalon Neighborhood Director: Julie Newman
Admissions Specialist: Lori Bagniewski
Dining & Nutrition Director: Francie Ball
Hospitality Services Supervisor: Christine Brown
Human Resources Supervisor: Lauren Schams
Maintenance Supervisor: Joe Sheffer
MDS Nurse Supervisor: Kathy Hazelton
Pastoral Care: Linda Kuehl
Recreation Therapy Supervisor: Kim Scholze
Skin Care Management Team: Maureen Brohmer & Julie Newman
Social Services: Danielle Jeffers, Rachel Forer & Angie Horge

Bethany St. Joseph Care Center (BSJ Care Center), located on Shelby Road in La Crosse, offers an array of skilled nursing and rehabilitative services for individuals of various ages and diverse care needs. For those with memory care needs, Avalon provides a place of understanding & support. Our goal is to help our residents reach their optimum level of health.



BSJ Care Center: A Bethany St. Joseph Corporation Facility
“Inspiring Life, Hope and Healing”